



Crystal clear optics

The SEACAM port system



The extensive product range of high-quality ports and special optics for a wide variety of applications has been the benchmark for uncompromising image quality for years. Precisely and perfectly tailored to your lens, all SEACAM ports always retain their brilliance under water while the angle of view is fully preserved.

INTRODUCTION

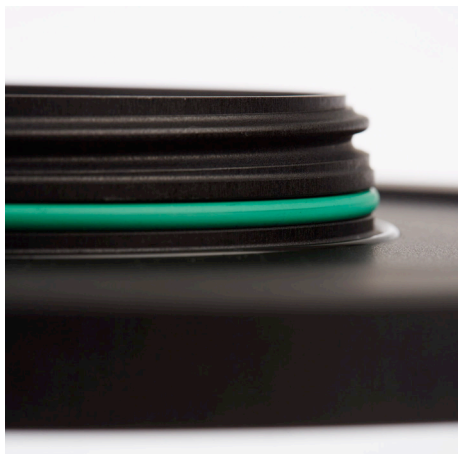
Each of our ports is precisely calculated to meet your needs and to find the right combination for every underwater lens. We work with practical port extensions in different lengths made of hardened synthetics, through which each lens and each port can be individually adapted to your camera system. You can find a complete list of our port combinations on our website or in the SEACAM configurator.

PRODUCTS

Discover our range of ports for every underwater challenge. Whether super wide angle, macro or free diving – with the right port nothing stands in the way of great underwater pictures.



THE UNIQUE PORT CONNECTION



With this specially developed, powerful connection, the bayonet thread pulls the O-ring into the sealing surface with just one turn and positions the port exactly at the stop. The 360° overlap guarantees a secure seal, while a second O-ring provides additional protection against dirt and fine-grained sand.

QUALITY LENSES WITH OPTICAL COATING

Neutral and hardened mineral glass of the highest transparency is used in every SEACAM port. Upon individual request, the precisely calculated and polished port glasses are also available with a high-quality optical coating in order to achieve largely reflection-free transmission of the light.



PORT EXTENSIONS

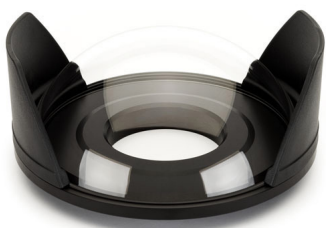


In order to guarantee sufficient flexibility with the extensive range of lenses for modern cameras, each port is precisely adapted to your lens using practical port extensions. These individual extensions with our special bayonet thread make it possible for your lens to produce ideal imaging results in any SEACAM housing.

Overview

ALL SEACAM dome ports

Depending on the size, the mounts of the dome ports are made of technical synthetics or a high-strength light metal alloy. Some dome ports have a precisely calculated integrated sun visor and the optical coating on the inside (except for the fisheye port) is available as well. An anti-reflective coating of the port frame with black textile flock is also optional.



SD SUPERDOME

Due to its large diameter, this highly precise port made of hardened mineral glass is unique in terms of image quality, edge sharpness and brilliance. The opening with a diameter of 240mm is made of high-strength light metal and is also available as a thicker version for diving depths of up to -200m.



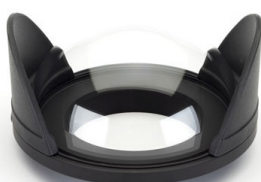
CP COMPACT PORT

With a diameter of only 170mm, the compact port guarantees the best optical imaging quality and fully preserved edge sharpness, even in with its compact, travel-friendly size. The new format makes it the perfect travel companion and ideal for use with various lenses.



WP WIDEPORT

The wide-angle port for 20mm wide-angle optics guarantees extraordinary results with a fully preserved picture angle and edge sharpness. The wideport frame with practical sun visors and 140mm in diameter is made of strengthened synthetics.



FP FISHEYEPORT

The fisheye port offers the highest image quality for fisheye lenses with a diagonal angle of view of 180°. The port opening with a diameter of 160mm is made of a high-strength light metal alloy and the sun visors can be easily removed from this port for circular fisheye lenses.

Overview

All SEACAM macro ports & accessories

Precisely dimensioned lens and port optics are particularly important in the macro range. With our special solutions for macro photography, we offer you various options for perfect image quality in every situation.



MIP 80 / MIP 60

The innovative, conically shaped MIP microport offers maximum flexibility with minimal flash shadowing. This special port has been adapted to all common lenses, is available in two lengths - as MIP 80 and MIP 60 - and enables precise adjustment for your system.



FMP FISHEYE MAKRO PORT

This special port enables spectacular macro shots in impressive wide-angle quality. The opening for this compact dome port measures 105mm in diameter and is made of strengthened synthetics - available in lengths S, M and L, depending on your lens.



FMP FISHEYE MAKRO PORT CIRCULAR

Developed for Canon and Nikon 8-15 fisheye zoom lenses, this handy port is ideal for exciting wide-angle close-up shots. This port creates spectacular underwater images with a particularly close distance to macro lenses with a wide-angle effect.

Overview

The SEACAM Achromat System

When things get really small, the best option is to use a closeup lens – an Achromat. We now offer three different options with different optical scales – the perfect match to use with the practical and flexible flip system (see below).



ACHROMAT 2.0
Scale of 2:1



ACHROMAT 3.0
Scale of 3:1



ACHROMAT 4.0
Scale of 4:1

SEACAM FLIP ADAPTER SYSTEM

Just in time for the launch of the 4.0 MICRO LENS, we now also offer the long-awaited flip adapter system. Easily switch from macro to super macro and back – either with a single adapter or even a second extension if you want to use our two close-up lenses. The flip system is quickly mounted onto the MIP 60 or MIP 80 and, as already mentioned, fits both of the new SEACAM achromats. The basic setup is designed for one lens; with the extension, which is fixed to the base, you always have the option to extend your system.



Do you have questions about our products?

We're happy to help.

www.seacam.com

office@seacam.com / +43 3142 228850

Facebook [seacam.original](https://www.facebook.com/seacam.original) / Instagram [seacam_official](https://www.instagram.com/seacam_official)